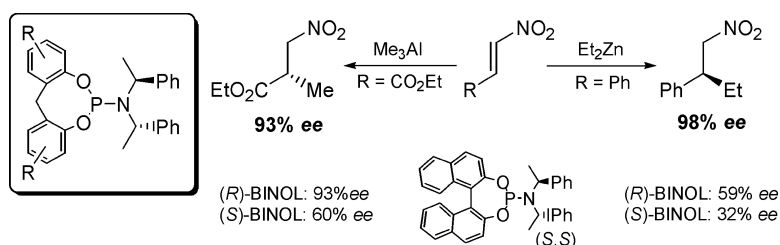


Catalyst Self-Adaptation in Conjugate Addition to Nitroalkenes and Nitroacrylates: Instant Chirality Control in Diphenylmethane-Based Phosphoramidite Ligands

Kazuki Wakabayashi, Kohsuke Aikawa, Susumu Kawauchi, and Koichi Mikami

J. Am. Chem. Soc., **2008**, 130 (15), 5012-5013 • DOI: 10.1021/ja710340n • Publication Date (Web): 22 March 2008

Downloaded from <http://pubs.acs.org> on February 8, 2009



More About This Article

Additional resources and features associated with this article are available within the HTML version:

- Supporting Information
- Links to the 2 articles that cite this article, as of the time of this article download
- Access to high resolution figures
- Links to articles and content related to this article
- Copyright permission to reproduce figures and/or text from this article

[View the Full Text HTML](#)

Catalyst Self-Adaptation in Conjugate Addition to Nitroalkenes and Nitroacrylates: Instant Chirality Control in Diphenylmethane-Based Phosphoramidite Ligands

Kazuki Wakabayashi,[†] Kohsuke Aikawa,[†] Susumu Kawauchi,[‡] and Koichi Mikami^{*†}

Departments of Applied Chemistry and Organic and Polymeric Materials, Tokyo Institute of Technology, O-okayama, Meguro-ku, Tokyo 152-8552, Japan

Received November 15, 2007; E-mail: mikami.k.ab@m.titech.ac.jp

Asymmetric catalysis¹ has long relied on the design of chirally rigid, particularly atropisomeric (*atropos* in Greek),² ligands to attain high enantioselectivity. However, even higher enantioselectivity has recently been attained by chirally flexible (*tropos*)² achiral benzophenone-derived diphosphine ligands, of which the chirality is *instantaneously* controlled by a chiral activator (A^*-A) (Scheme 1a, M = Ru, Rh, Pd, and Pt).³

Recently, binaphthol (BINOL)-derived phosphoramidite ligands were developed for asymmetric conjugate additions.⁴ The addition to nitroalkenes⁵ is one of the most synthetically important methods to provide chiral amino (acid) derivatives⁶ but requires the matched combination of BINOL and amine chiralities (Scheme 2, ligand **B**). We report here *tropos* benzophenone-like phosphoramidite ligands (**A**) in which the chirality can be *instantaneously* controlled⁷ by a chiral amine built therein (Scheme 1b). Higher enantioselectivity and catalytic activity can be attained in the Cu catalysis, by virtue of instant chirality control in the ligands **A**; the ligands **A** fit well and *instantly* with substrates and reagents (Scheme 2).

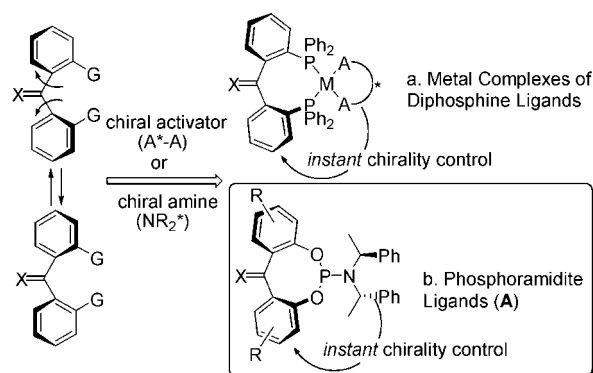
Complexation of phosphoramidite ligands **A** (A^1 : X = H₂, R = 4-Me; A^2 : X = H₂, R = H) and PdCl₂(cod) was found to give single PdCl₂A₂ enantiomers within minutes. Single PdCl₂A₂ enantiomers with C₂-symmetry were instantaneously observed in ¹H NMR to show two singlets of four 4-Me groups in **2A** (see Supporting Information).

The advantage of the phosphoramidite ligand **A** can be seen in the conjugate addition of diethylzinc to β -nitrostyrene (Table 1). Even at -78 °C within 3 h, the ligand **A** showed remarkably high catalytic activity and enantioselectivity in the Cu catalysis (>99%, 98% ee, entries 2 and 3).⁸

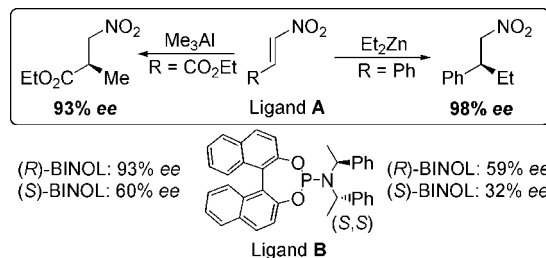
In order to differentiate from the biphenol (BIPOL) counterpart **C**, the conformation of the Cu²⁺ precatalyst with the ligand **A**² was deduced with DFT calculation. Figure 1 shows the most stable conformation localized in the Cu²⁺ precatalyst with the phosphoramidite ligand **A**². The side view of the **A**² complex shows the more effective shielding of phenyl rings to give higher enantioselectivity than the BIPOL or BINOL counterparts (**C**, **B**) as observed in Table 1. The ethane-bridged phosphoramidite **A'** shows a similarly (or more) effective shielding of phenyl rings.⁹

Conjugate additions to other nitroalkene substrates were also examined with the ligand **A**¹ to give constantly high enantioselectivities (Table 2). The *p*-, *m*-, and *o*-methoxyphenyl, *p*-methylphenyl, and furyl substrates were also shown to give high enantiomeric excesses (up to 99% ee).¹⁰

Scheme 1. Instant Chirality Control in Ligands (**A**)



Scheme 2. Conjugate Additions to Nitroalkenes and Nitroacrylates



By contrast, enantioselectivity obtained even by an excellent *atropos* biphenyl phosphoramidite ligand **D** sharply decreased from *p*- to *o*-methoxyphenyl substrates (99 to 68% ee, entries 5, 7, and 9). The high enantioselectivity with ligand **A**¹ (97 to 91% ee, entries 4, 6, and 8) exemplifies the advantage of instant chirality control to fit well with the substrate change.

With the success in dialkylzinc reagent, the conjugate addition of trimethylaluminum reagent to nitroacrylate substrate was then

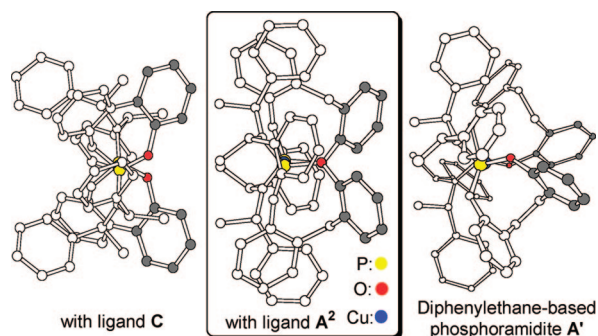
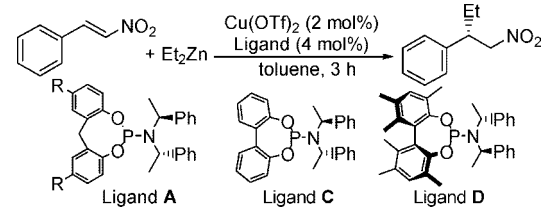


Figure 1. DFT calculations of Cu²⁺ precatalysts.

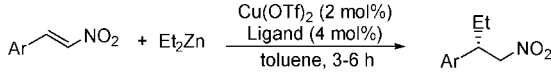
[†] Department of Applied Chemistry.

[‡] Department of Organic and Polymeric Materials.

Table 1. Asymmetric Conjugate Additions of Et₂Zn to β -Nitrostyrene


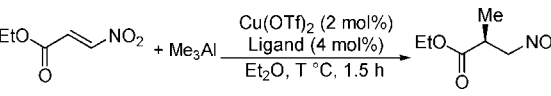
entry	ligand	temp (°C)	conv. (%)	ee (%)
1	A ¹ (R = Me)	-45	>99	94 (S)
2	A ¹ (R = Me)	-78	>99	98 (S)
3	A ² (R = H)	-78	>99	98 (S)
4 ^a	(R)/(S,S)-B	-45	>99	59
5 ^b	(R)/(S,S)-B	-30	>99	48 (R)
6 ^c	(R)/(S,S)-B	-78	90	48 (S)
7 ^a	(S)/(S,S)-B	-45 ^d	>99	32
8 ^c	(S)/(S,S)-B	-78	80	39 (S)
9 ^a	C	-45	>99	77
10 ^b	C	-30	>99	8 (R)
11 ^e	D	-65	>99	94 (R)

^a See ref 5d. ^b See ref 5c. ^c See ref 5a. ^d Lower temperature (-78 °C) led to a lower reaction rate. ^e Cu(OTf)₂ (1 mol %), ligand (2 mol %), reaction time (6 h) (ref 5g).

Table 2. Asymmetric Conjugate Additions of Et₂Zn to Nitroalkenes


entry	Ar	ligand	temp (°C)	conv. (%)	ee (%)
1	<i>p</i> -MePh	A ¹	-78	>99	96
2 ^a	<i>p</i> -MePh	(R)/(S,S)-B	-30	>99	25
3 ^b	<i>p</i> -MePh	D	-65	>99	98
4	<i>p</i> -MeOPh	A ¹	-78	>99	97
5 ^b	<i>p</i> -MeOPh	D	-65	>99	99
6	<i>m</i> -MeOPh	A ¹	-78	>99	93
7 ^b	<i>m</i> -MeOPh	D	-65	>99	84
8	<i>o</i> -MeOPh	A ¹	-78	99	91
9 ^b	<i>o</i> -MeOPh	D	-65	>99	67
10	<i>p</i> -CF ₃ Ph	A ¹	-78	>99	91
11 ^b	<i>p</i> -CF ₃ Ph	D	-65	>99	77
12	furyl	A ¹	-78	>99	99
13 ^a	furyl	(R)/(S,S)-B	-30	>99	8
14 ^b	furyl	D	-65	>99	92

^a See ref 5b. ^b Cu(OTf)₂ (1 mol %), ligand (2 mol %), reaction time (6 h) (ref 5g).

Table 3. Conjugate Additions of Me₃Al to Nitroacrylate


entry	ligand	temp (°C)	yield (%)	ee (%)
1	A ¹	-78	>99	93 (S)
2	(S)/(R,R)-B	-78	74	93 (R)
3	(R)/(R,R)-B	-78	72	60 (R)
a	(S)/(R,R)-B	-50	85	92 (R)

^a See ref 11c.

examined¹¹ to give synthetically useful β -amino acid derivative, β^2 -alanine¹² (Table 3). Phosphoramidite ligand A¹ afforded high yield and enantioselectivity (>99%, 93% ee). The product can be easily transformed to β^2 -alanine ethyl ester by hydrogenation with palladium on charcoal.^{11c}

In summary, we have developed the ligands **A** to give higher enantioselectivity and catalytic activity in the Cu-catalyzed conjugate additions to nitroalkenes, by virtue of their instant chirality control. The highly *tropos* phosphoramidite ligands **A** outperform the analogous rigid (*atropos*) BINOL- and even BIPOL-derived phosphoramidite ligands. These results represent emblematic cases of catalyst self-adaptation and tuning.

Acknowledgment. This work was supported by a Grant-in-Aid for Scientific Research on Priority Areas “Advanced Molecular Transformations of Carbon Resources” from the Ministry of Education, Culture, Sports, Science and Technology, Japan.

Supporting Information Available: Experimental procedures for the preparation of ligand **A** and for the conjugative addition to nitroalkenes; DFT calculation data of the Cu(II) precatalyst of ligand A² and **C** (PDF). This material is available free of charge via the Internet at <http://pubs.acs.org>.

References

- (1) (a) *Catalytic Asymmetric Synthesis*; Ojima, I., Ed.; VCH: New York, 1993, 2000; Vols. I and II. (b) Brunner, H.; Zettlmeier, W. *Handbook of Enantioselective Catalysis*; VCH: Weinheim, Germany, 1993. (c) Noyori, R. *Asymmetric Catalysis in Organic Synthesis*; Wiley: New York, 1994. (d) *Transition Metals for Organic Synthesis*; Beller, M., Bolm, C., Eds.; VCH: Weinheim, Germany, 1998. (e) *Comprehensive Asymmetric Catalysis*; Jacobsen, E. N., Pfaltz, A., Yamamoto, H., Eds.; Springer: Berlin, 1999; Vols. 1–3. (f) *New Frontiers in Asymmetric Catalysis*; Mikami, K., Lautens, M., Eds.; Wiley: New York, 2007.
- (2) The word *atropos* consists of “a” meaning “not” and “*tropos*” meaning “turn” in Greek. Therefore, the chirally rigid or flexible nature of a ligand can be called *atropos* or *tropos*, respectively. (a) Mikami, K.; Aikawa, K.; Yusa, Y.; Jodry, J. J.; Yamanaka, M. *Synlett* **2002**, 1561–1578. Also see: (b) Kuhn, W. In *Stereochemistry*; Freudenberg, K., Ed.; Franz Deuticke: Leipzig, 1933; pp 803–824.
- (3) Review: (a) Mikami, K.; Yamanaka, M. *Chem. Rev.* **2003**, *103*, 3369–3400. (b) Mikami, K.; Wakabayashi, K.; Aikawa, K. *Org. Lett.* **2006**, *8*, 1517–1519. (c) Mikami, K.; Wakabayashi, K.; Yusa, Y.; Aikawa, K. *Chem. Commun.* **2006**, 2365–2367. (d) Jing, Q.; Sandoval, C. A.; Wang, Z.; Ding, K. *Eur. J. Org. Chem.* **2006**, 3606–3616. (e) Mikami, K.; Sayo, N. *PCT Int. Appl.* **2005**, 107.
- (4) Reviews: (a) Feringa, B. L. *Acc. Chem. Res.* **2000**, *33*, 346–353. (b) Alexakis, A.; Benhaim, C. *Eur. J. Org. Chem.* **2002**, 3221–3236. (c) Feringa, B. L.; Naasz, R.; Imbos, R.; Arnold, L. A. In *Modern Organocopper Chemistry*; Krause, N., Ed.; Wiley-VCH: Weinheim, Germany, 2002; pp 224–258. (d) Feringa, B. L.; Pineschi, M.; Arnold, L. A.; Imbos, R.; de Vries, A. H. M. *Angew. Chem., Int. Ed. Engl.* **1997**, *36*, 2620–2623. *Tropos* biphenol ligand **C**; (e) Alexakis, A.; Rosset, S.; Allamand, J.; March, S.; Guillen, F.; Benhaim, C. *Synlett* **2001**, 1375–1378. (f) Hua, Z.; Vassar, V. C.; Choi, H.; Ojima, I. *Proc. Natl. Acad. Sci. U.S.A.* **2004**, *101*, 5411–5416. (g) Monti, C.; Gennari, C.; Piarulli, U. *Chem. Eur. J.* **2007**, *13*, 1547–1558.
- (5) Conjugate additions to nitroalkenes: (a) Sewald, N.; Wendisch, V. *Tetrahedron: Asymmetry* **1998**, *9*, 1341–1344. (b) Alexakis, A.; Benhaim, C. *Org. Lett.* **2000**, *2*, 2579–2581. (c) Alexakis, A.; Benhaim, C.; Rosset, S.; Humam, M. *J. Am. Chem. Soc.* **2002**, *124*, 5262–5263. (d) Duursma, A.; Minnaard, A. J.; Feringa, B. L. *Tetrahedron* **2002**, *58*, 5773–5778. (e) Luchaco-Cullis, C. A.; Hoveyda, A. H. *J. Am. Chem. Soc.* **2002**, *124*, 8192–8193. (f) Duursma, A.; Minnaard, A. J.; Feringa, B. L. *J. Am. Chem. Soc.* **2003**, *125*, 3700–3701. (g) Choi, H.; Hua, Z.; Ojima, I. *Org. Lett.* **2004**, *6*, 2689–2691. (h) Cote, A.; Lindsay, V. N. G.; Charette, A. B. *Org. Lett.* **2007**, *9*, 85–87.
- (6) Broen, B. R. *The Organic Chemistry of Aliphatic Nitrogen Compounds*; Oxford University: Oxford, 1994; pp 443–469.
- (7) Compared to one single bond rotation of a biphenyl compound, two single bond rotations of a benzophenone-like compound are more facile and the chirality in **A** can be instantaneously controlled. Also see: Lunazzi, L.; Mazzanti, A.; Minzoni, M. *J. Org. Chem.* **2005**, *70*, 456–462.
- (8) After submission of our paper, ligand A² has been reported to give, however, only low enantioselectivity (35% ee). Palais, L.; Mikhel, I. S.; Bournaud, C.; Falciola, C. A.; Vuagnoux-d’Augustin, M.; Rosset, S.; Bernardinelli, G.; Alexakis, A. *Angew. Chem., Int. Ed.* **2007**, *46*, 7462–7465.
- (9) The ethane-bridged phosphoramidites are now under investigation.
- (10) Conjugate additions to other nitroalkene substrates are shown in Supporting Information. The reaction with diphenylzinc did not take place.
- (11) Conjugate additions to nitroacrylates: (a) Versleijen, J. P. G.; van Leusen, A. M.; Feringa, B. L. *Tetrahedron Lett.* **1999**, *40*, 5803–5806. (b) Rimkus, A.; Sewald, N. *Org. Lett.* **2003**, *5*, 79–80. (c) Eilitz, U.; Leßmann, F.; Seidelmann, O.; Wendisch, V. *Tetrahedron: Asymmetry* **2003**, *14*, 3095–3097.
- (12) (a) Cheng, R. P.; Gellman, S. H.; DeGrado, W. F. *Chem. Rev.* **2001**, *101*, 3219–3232. (b) Hagiwara, H.; Anthony, N. J.; Stout, T. J.; Clardy, J.; Schreiber, S. L. *J. Am. Chem. Soc.* **1992**, *114*, 6568–6570.

JA710340N